

ABOUT MLKAY TECHNOLOGIES



MLKay Technologies provides innovative information technology & data services to the renewable energy, oil & gas, real estate & infrastructure sectors.

We are one of SMU's partners in the development of the DOE's National Geothermal Database.

We specialize in using data, technology and domain experience to identify scientifically relevant/economically viable investment opportunities for private companies, academic institutions, national laboratories, county, state & federal agencies.

GEOHERMAL DATA CHALLENGES

Developing geothermal power requires a significant amount of resource, engineering, business and infrastructure knowledge

Little geothermal specific data exists, so we turn to Oil & Gas data

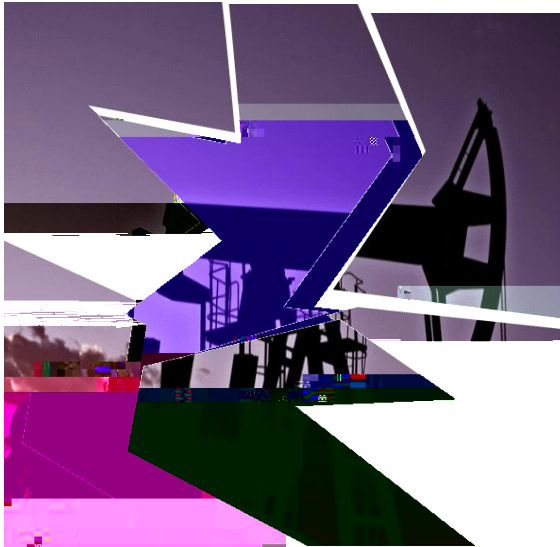
Oil & Gas data is vast, disparate and often difficult to work with

In TX alone, we have collected and organized 100M+ unique records on 1.2M distinct wells from 11 formats & 14 sources

Knowing what to look for, what to ignore, where to find it & how to access it requires both technological and domain experience (and a lot of patience). The NGDS will help solve much of this requirement

CHANGE YOUR PERSPECTIVE

Oil & Gas Data



Geothermal Data





WHAT DO WE NEED TO KNOW?

DATA SOURCES FOR TEXAS

Texas Rail Road Commission
Bureau of Economic Geology
Oil & Gas Companies
Well Log Libraries
Universities
Geologic Papers & Reports
Prior DOE Reports (Geopressure)
Retired Geologists Records

WHERE TO FIND THE DATA I?

Resource Type

Market Driven

Geographic

Well Headers

Surveys

Digital Map Data

Engineering/Wellbore

Well Headers

Wellbore Data

Well Test Data

Well Status Data

Infrastructure

Topographical GIS Layers

Pipeline GIS Layer

Water Resource Layer

Ambient Conditions

ERCOT Grid-Interconnect

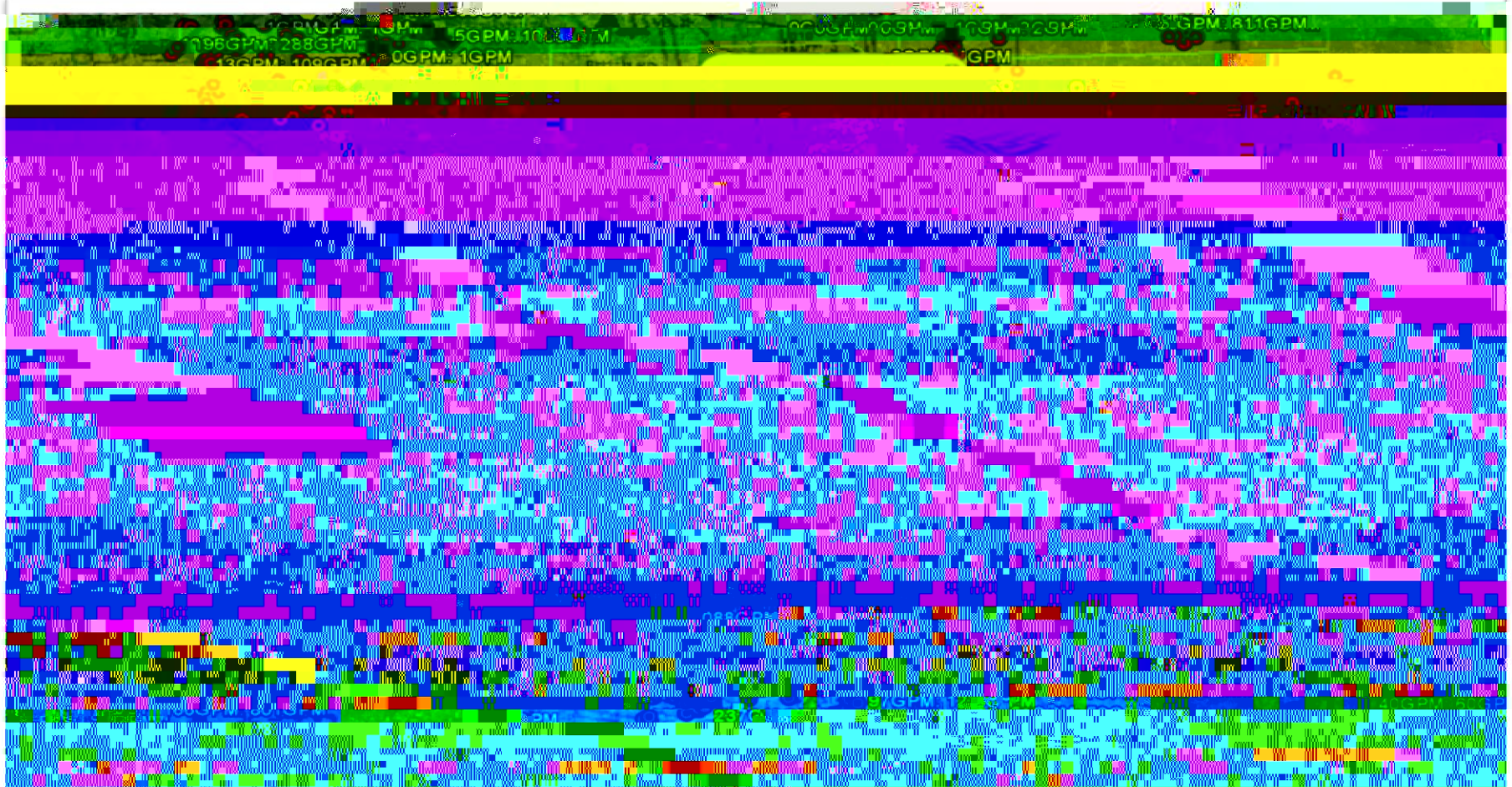
Production & Flow

Injection & Disposal Data

Well Test Data

Production Data

VISUAL REPRESENTATION I



Injection & Disposal ALL YEARS, Depth > 10,000 ft, Producing or Temp Abandoned, Display Infrastructure, Display Grid

WHERE TO FIND THE DATA II?

Heat Flow

Well Headers
Temperature Tests
Heatflow Databases

Geophysical

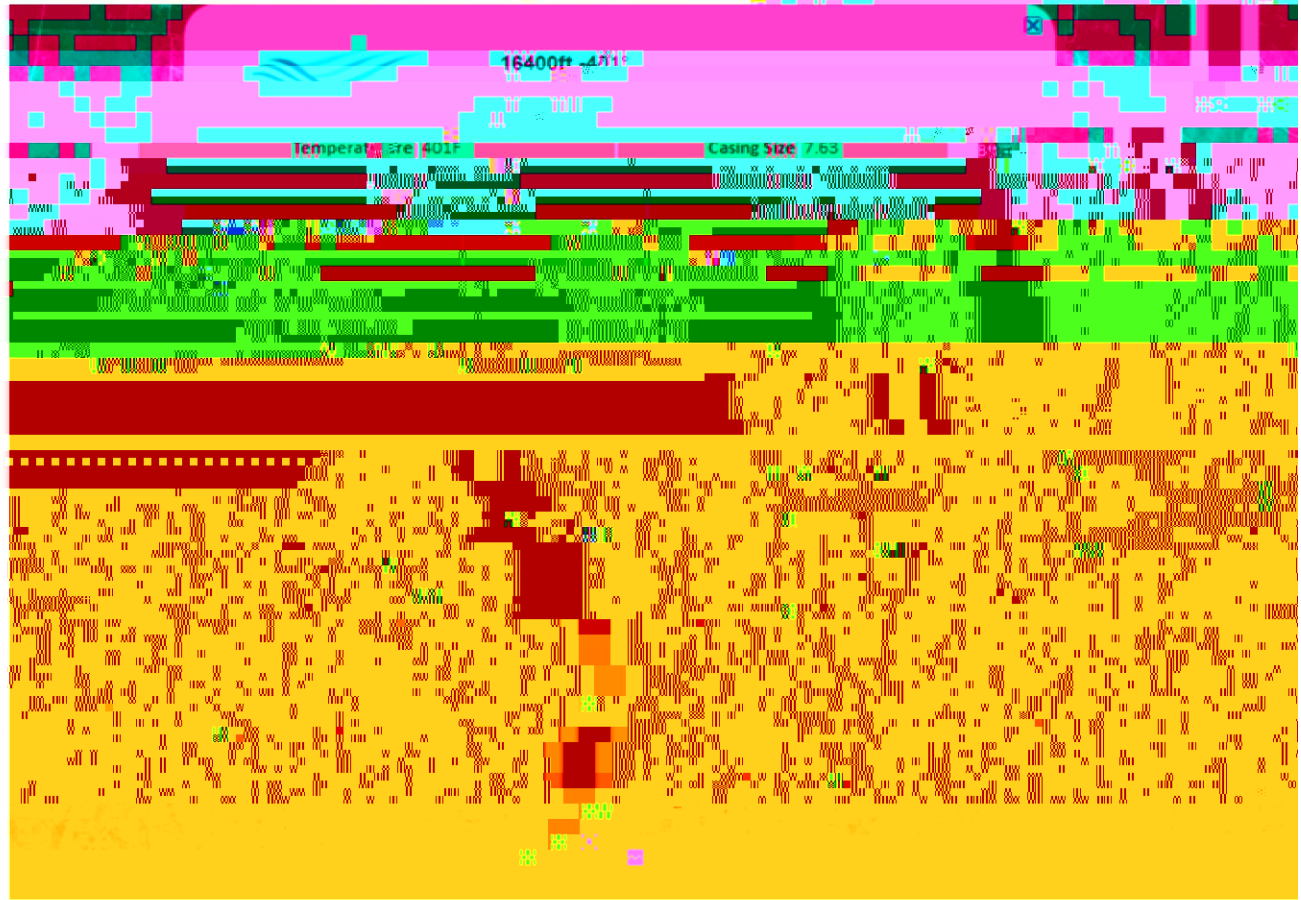
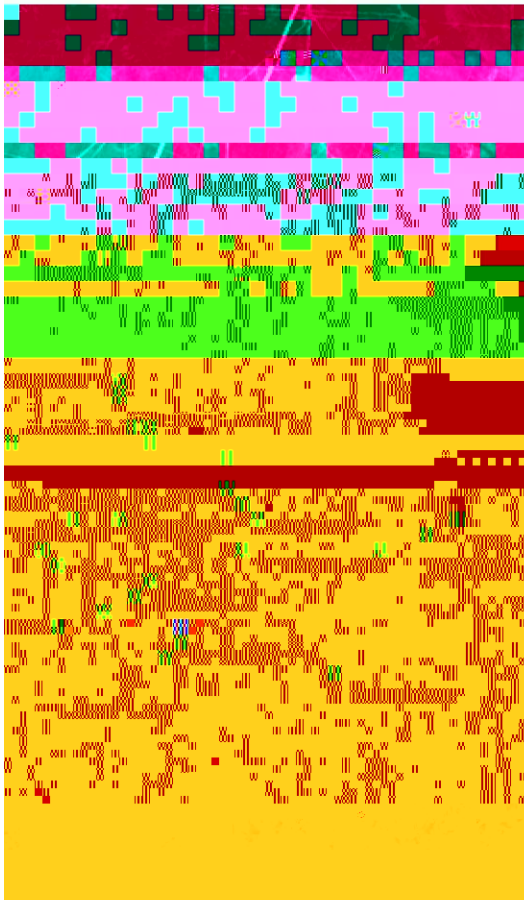
Well Logs
Seismic Data

Geology

Well Logs
Well Test Data
Drill Stem Tests

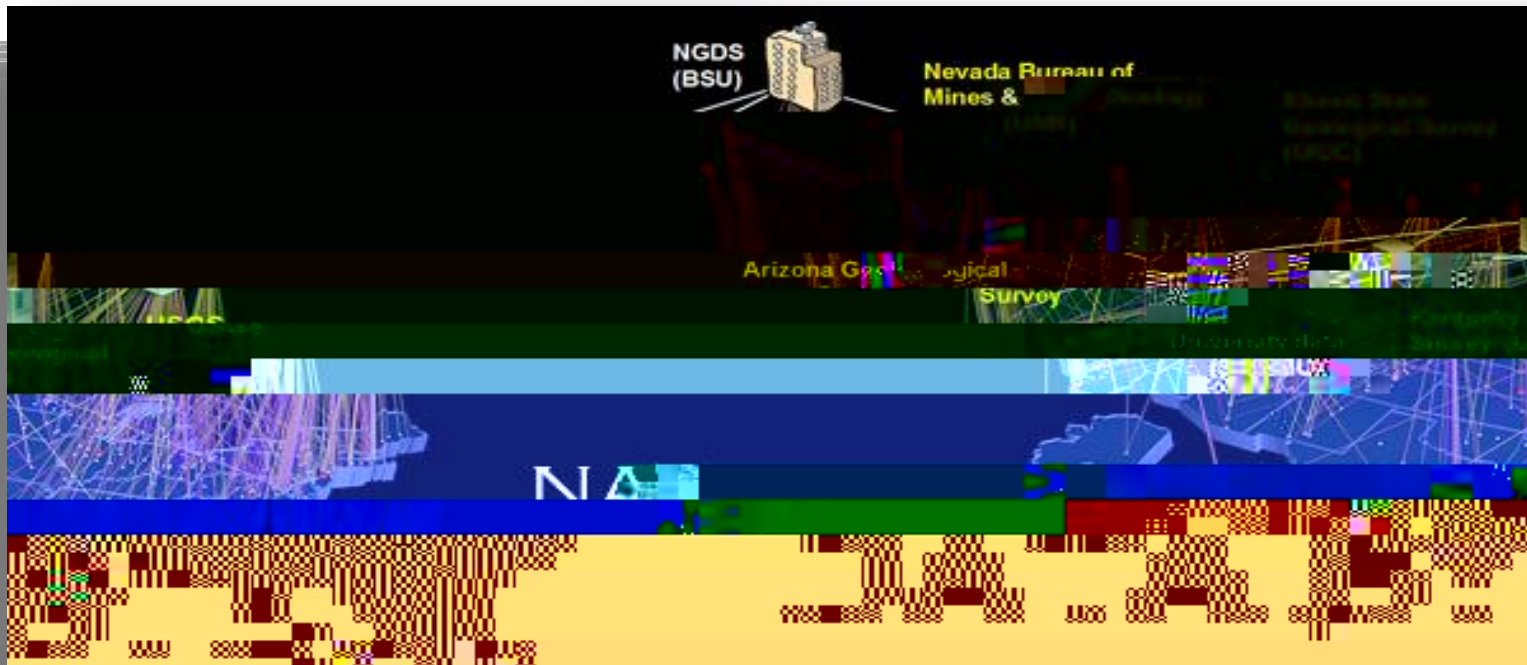
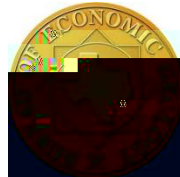
Economic & Business

VISUAL REPRESENTATION II



Wellbore >10,000 ft., Temperature >270F, Well Type = Gas, Display Infrastructure

ORGANIZING & ACCESSING DATA



THANK YOU



Martin Kay, Managing Director
MLKay Technologies, LLC
Houston, TX
Main Tel: 888.203.4311
Direct: 713.568.5440
martin@mlkay.com